



Starting from **\$230,000***



4 Bedrooms



2 Bathrooms



2 Garages

Price based on standard inclusions and facade options on a flat block in metro Melbourne South East suburbs. Excludes site costs. Prices are correct at time of publication (September 2020)

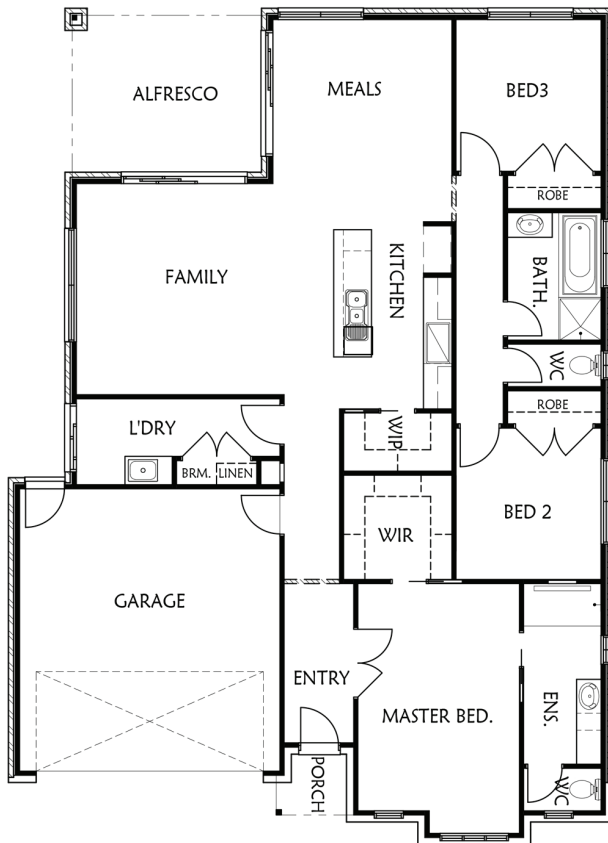
Room to entertain with room to grow

Designed for your growing family, the Belmont is the next wave of modern home designs. It comes with an outstanding combination of 4 family shared spaces, including a rumpus, play and a family room, as well as a generous master suite to give you space to retreat and relax. This home is designed with your busy lifestyle in mind, offering separated living and sleeping areas ensuring your family will be happy whether entertaining, working from home or just trying to relax! The Belmont features a meal area overlooking the alfresco space and when this is combined with the family areas and open living it is an entertainer's delight. This 4 bedroom, 2 bathroom floor plan gives you the options to tailor the rooms to your needs as you family grows.

Key Features

- Large bedrooms, and a master suite with a generous walk-in wardrobe and ensuite
- Give the kids their own space with a play room and rumpus room to suit your family – a total of 4 shared family spaces!
- Designed to separate your living and sleeping spaces for total comfort and noise control
- A must-have walk-in pantry for the inner MasterChef or the everyday cook

*Floor plan options and additional inclusions at extra cost.



Room Sizes

Family	5.5m x 4.5m
Kitchen	2.5m x 4.0m
Meals	3.8m x 4.3m
Rumpus	3.8m x 4.0m
Garage	5.5m x 6.0m
Main Bedroom	3.4m x 3.8m
Bedroom 2	3.1m x 3.2m
Bedroom 3	3.1m x 3.2m
Bedroom 4	3.1m x 3.2m
Alfresco	4.2m x 3.5m

Area Analysis

Dwelling	152.6m ²
Porch	1.7m ²
Alfresco	14.5m ²
Garage	36.3m ²

Choose Your Options

Make this new house your home with our range of facades and interior options to suit your style.

- Facades available for this home - Traditional / Newtown / Tempo
- Comes with all standard inclusions with luxe upgrade options available

Getting your own dedicated stylist consultant service is all part of the service!

Putting your individual flair into your new house is the best way to make it your home. We want building your new home to be a great experience for you and your family. That is why we offer some really unique inclusions to our build process.

Early in your journey we will introduce you to your design consultant. This is a person dedicated to helping you make the right choices to match your style and give you the home, inside and out that you have been dreaming of. Regardless of how little, or how much, you already know about your style and what you want in a home, working with your design consultant will ensure you choose the best finishings, fittings and facade to deliver the home of your dreams.

"Rawdon Hill endeavours to ensure that information is free from error; however, it does not warrant the accuracy, adequacy or completeness of that information. Rawdon Hill also endeavours to ensure that information, including prices, home design information and home inclusions, is up to date. However, this information is subject to change without notice. In particular, prices and inclusions for homes are displayed in purchase contracts. Unless expressly stated otherwise, the information on this brochure does not constitute an offer or inducement to enter into a legally binding contract, and does not form part of the terms and conditions for Rawdon Hill products and services.