



Starting from **\$330,000***



4 Bedrooms



2 Bathrooms



2 Garages

Price based on standard inclusions and facade options on a flat block in metro Melbourne South East suburbs. Excludes site costs. Prices are correct at time of publication (September 2020)

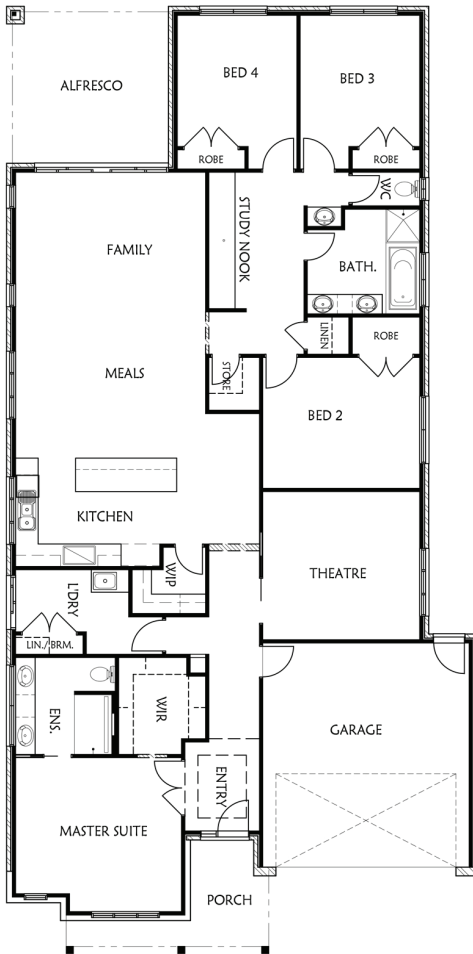
Be the envy of your street

Featuring 4 generous bedrooms, 2 bathrooms, a study nook, huge family spaces inside, and a designed alfresco outside, the Clare is the jewel in the crown when it comes to our homes. We left no stone unturned offering innovative use of space, flowing entertainment areas and family common spaces. Create your own Hampton's Luxe wherever you choose to build this exciting and expansive home. The Clare offers your family everything you will need under one roof - a kitchen design fit for a chef opening out to a large meal and family room with easy access to your alfresco for outdoor meals over those long summer months. We really did think of you when we put this design together offering sectional living with bedrooms separated around the floor plan to ensure everyone has their own area, and the center of the home is all about space and luxury.

Key Features

- Thought-out floorplan that makes for great entertaining and functional living, including a walk in pantry
- Large bedrooms, and a master suite with a generous walk-in wardrobe and ensuite
- Take advantage of space with a study nook and theater room in this design
- Spacious and comfortable living areas designed with the latest interior trends

*Floor plan options and additional inclusions at extra cost.



Room Sizes

Family	5.1m x 4.2m
Kitchen	5.1m x 3.1m
Meals	5.1m x 3.2m
Study	2.5m x 3.6m
Theatre	4.2m x 4.0m
Garage	5.5m x 6.0m
Main Bedroom	4.4m x 3.6m
Bedroom 2	4.2m x 3.5m
Bedroom 3	3.2m x 3.5m
Bedroom 4	3.2m x 3.5m
Alfresco	4.3m x 4.2m

Area Analysis

Dwelling	219.8m ²
Porch	7.9m ²
Alfresco	18.1m ²

Choose Your Options

Make this new house your home with our range of facades and interior options to suit your style.

- Facades available for this home - Derwent / Heathcote
- Comes with all standard inclusions with luxe upgrade options available

Getting your own dedicated stylist consultant service is all part of the service!

Putting your individual flair into your new house is the best way to make it your home. We want building your new home to be a great experience for you and your family. That is why we offer some really unique inclusions to our build process.

Early in your journey we will introduce you to your design consultant. This is a person dedicated to helping you make the right choices to match your style and give you the home, inside and out that you have been dreaming of. Regardless of how little, or how much, you already know about your style and what you want in a home, working with your design consultant will ensure you choose the best finishings, fittings and facade to deliver the home of your dreams.

"Rawdon Hill endeavours to ensure that information is free from error; however, it does not warrant the accuracy, adequacy or completeness of that information. Rawdon Hill also endeavours to ensure that information, including prices, home design information and home inclusions, is up to date. However, this information is subject to change without notice. In particular, prices and inclusions for homes are displayed in purchase contracts. Unless expressly stated otherwise, the information on this brochure does not constitute an offer or inducement to enter into a legally binding contract, and does not form part of the terms and conditions for Rawdon Hill products and services.