



Starting from **\$315,000\***



4 Bedrooms



2 Bathrooms



2 Garages

Price based on standard inclusions and facade options on a flat block in metro Melbourne South East suburbs. Excludes site costs. Prices are correct at time of publication (September 2020)

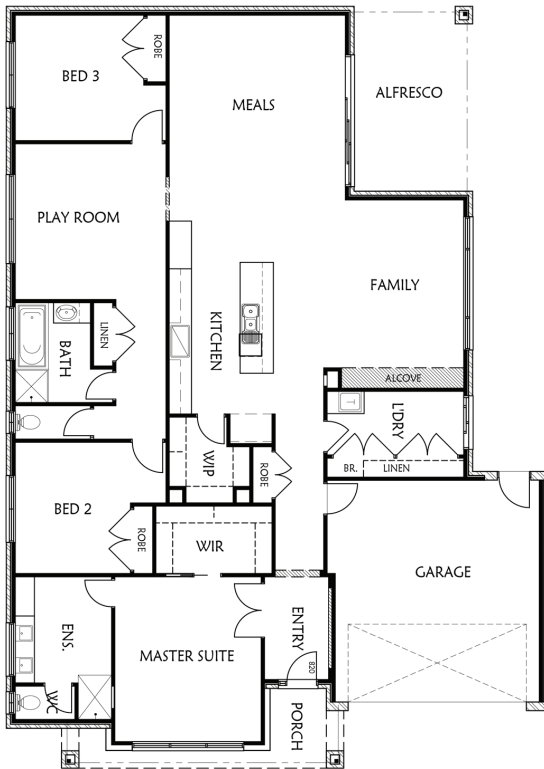
## Functional harmony, with the space your family needs

Functionality meets harmony in this carefully configured 4-bedroom home. The Denmark caters to families of all sizes, with open plan living for easy flow from communal areas to private retreats in the form of a separate rumpus and play-room space. This impressive floor plan offers 4 separate living spaces for your family to enjoy. Building the home of your dreams has never been more practical with this floor plan offering a large family home with modern design and contemporary finishes and well thought out living spaces. Take advantage of all the modern accompaniments with a chef's kitchen and a walk in pantry to make entertaining and family meals an absolute joy.

### Key Features

- A master suite with a generous walk-in wardrobe and an ensuite complete with a double vanity and shower
- A play room area and study-nook are perfect to keep the kids occupied and on-top of their homework
- Retreat to a private rumpus room that can also serve as a home theatre space
- A must-have walk-in pantry and a large kitchen equipped with the latest appliances for the inner MasterChef or the everyday cook

\*Floor plan options and additional inclusions at extra cost.



## Room Sizes

Family	5.1m x 4.5m
Kitchen	2.8m x 5.8m
Meals	4.7m x 5.0m
Rumpus	4.1m x 4.9m
Playroom	4.1m x 3.4m
Alfresco	3.2m x 5.0m
Master Bedroom	3.9m x 4.5m
Bedroom 2	3.1m x 3.5m
Bedroom 3	3.5m x 3.4m
Bedroom 4	3.5m x 3.3m
Garage	5.5m x 6.0m

## Area Analysis

Dwelling	205.3m <sup>2</sup>
Porch	7.4m <sup>2</sup>
Alfresco	16.0m <sup>2</sup>

## Choose Your Options

Make this new house your home with our range of facades and interior options to suit your style.

- Facades available for this home - Clare
- Comes with all standard inclusions with luxe upgrade options available

## Getting your own dedicated stylist consultant service is all part of the service!

Putting your individual flair into your new house is the best way to make it your home. We want building your new home to be a great experience for you and your family. That is why we offer some really unique inclusions to our build process.

Early in your journey we will introduce you to your design consultant. This is a person dedicated to helping you make the right choices to match your style and give you the home, inside and out that you have been dreaming of. Regardless of how little, or how much, you already know about your style and what you want in a home, working with your design consultant will ensure you choose the best finishings, fittings and facade to deliver the home of your dreams.

"Rawdon Hill endeavours to ensure that information is free from error; however, it does not warrant the accuracy, adequacy or completeness of that information. Rawdon Hill also endeavours to ensure that information, including prices, home design information and home inclusions, is up to date. However, this information is subject to change without notice. In particular, prices and inclusions for homes are displayed in purchase contracts. Unless expressly stated otherwise, the information on this brochure does not constitute an offer or inducement to enter into a legally binding contract, and does not form part of the terms and conditions for Rawdon Hill products and services.