



Starting from **\$320,000***



4 Bedrooms



2.5 Bathrooms



2 Garages

Price based on standard inclusions and facade options on a flat block in metro Melbourne South East suburbs. Excludes site costs. Prices are correct at time of publication (September 2020)

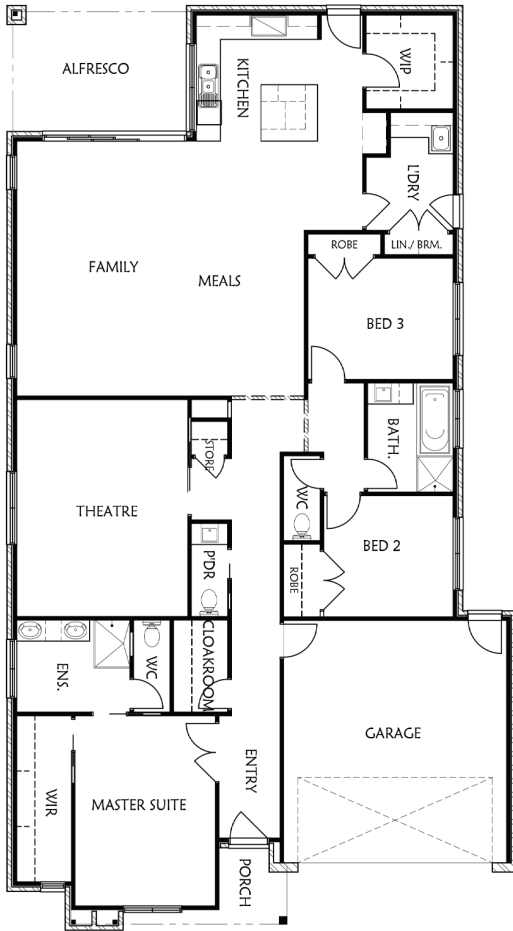
The entertainer's dream

Contemporary design and spacious living, the Eyre is an entertainer's dream. A standout of the home is the large alfresco; accessible through the open plan kitchen, family and meals areas with a large walk-in pantry. Combine the 3 generous living spaces with impressively sized bedrooms and you can have the perfect home to entertain and relax. This home is set up with family in mind with huge common areas, a massive kitchen with walk in pantry and a secluded and significantly sized master suite - so everyone can have their own space when they need it.

Key Features

- Large bedrooms, and a master suite with a generous walk-in wardrobe and an ensuite with a freestanding bath
- Take advantage of a purpose built theatre room or gaming room for the kids - old and young
- Entertain like a pro with a full-sized walk-in pantry and server-style window to the alfresco
- An extra-large island stone kitchen bench and the latest appliances

*Floor plan options and additional inclusions at extra cost.



Room Sizes

Family	4.1m x 6.3m
Kitchen	4.1m x 3.1m
Meals	3.0m x 6.3m
Theatre	4.2m x 5.4m
Garage	5.5m x 6.0m
Bedroom 1	3.5m x 4.7m
Bedroom 2	3.2m x 3.0m
Bedroom 3	3.6m x 3.0m
Bedroom 4	3.6m x 3.0m
Alfresco	4.4m x 3.1m

Area Analysis

Dwelling	203.7m ²
Porch	5.3m ²
Alfresco	13.8m ²
Garage	36.4m ²

Choose Your Options

Make this new house your home with our range of facades and interior options to suit your style.

- Facades available for this home - Eyre
- Comes with all standard inclusions with luxe upgrade options available

Getting your own dedicated stylist consultant service is all part of the service!

Putting your individual flair into your new house is the best way to make it your home. We want building your new home to be a great experience for you and your family. That is why we offer some really unique inclusions to our build process.

Early in your journey we will introduce you to your design consultant. This is a person dedicated to helping you make the right choices to match your style and give you the home, inside and out that you have been dreaming of. Regardless of how little, or how much, you already know about your style and what you want in a home, working with your design consultant will ensure you choose the best finishings, fittings and facade to deliver the home of your dreams.

"Rawdon Hill endeavours to ensure that information is free from error; however, it does not warrant the accuracy, adequacy or completeness of that information. Rawdon Hill also endeavours to ensure that information, including prices, home design information and home inclusions, is up to date. However, this information is subject to change without notice. In particular, prices and inclusions for homes are displayed in purchase contracts. Unless expressly stated otherwise, the information on this brochure does not constitute an offer or inducement to enter into a legally binding contract, and does not form part of the terms and conditions for Rawdon Hill products and services.